

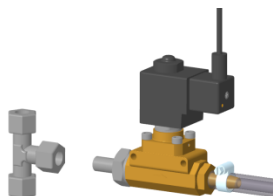
Optimisation Top-Climate-System (D-Line pump units)



The D-Line pump series replaces the Eco-pump units. In new orders from May 1st, 2019 the relevant parts will be replaced appropriately.

An individual customization of the systems is now simplified by new modules. Special pumps were designed for supply frequency of 60 Hz and an additional pump size for even bigger systems is now available. Furthermore the optionally available wall mounting kit (art. 7290) allows a vibration damped wall mounting of the new pump series.

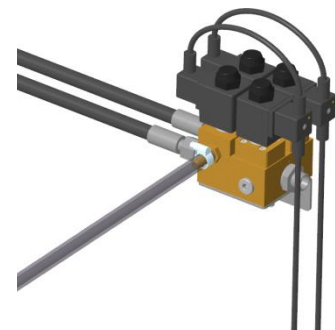
The D-Line pump units include the basic components (motor, pump, pressure regulator, pressure switch, pressure gauge, switch box etc.). A flexible integration of optional special features can be realized with separate additional modules:



Art. 7113
Pressure relief module



Art. 7114
Additional module 2-house
without pressure relief



Art. 7115
Additional module 2-house
with pressure relief

Only the Vario pump units always have an integrated electric pressure relief, because this is always necessary in Vario-systems.

For a better accessibility the main valve is now part of the filter unit. Depending on the pump unit different main valves are needed:

Flow rates up to 25 l/min:	filter unit with 1/2"-valve
Flow rates higher than 25 l/min:	filter unit with 3/4"-valve
Version for HR-systems:	filter unit with 1/2"-valve, stainless steel



Shown example: Central filter unit with 4 filters, 1/2"-valve and manometer, brass, incl. bypass for doser 3/4" (Art. 7126-V1-B) with medicator D25RE5 (Art. 4238-1)

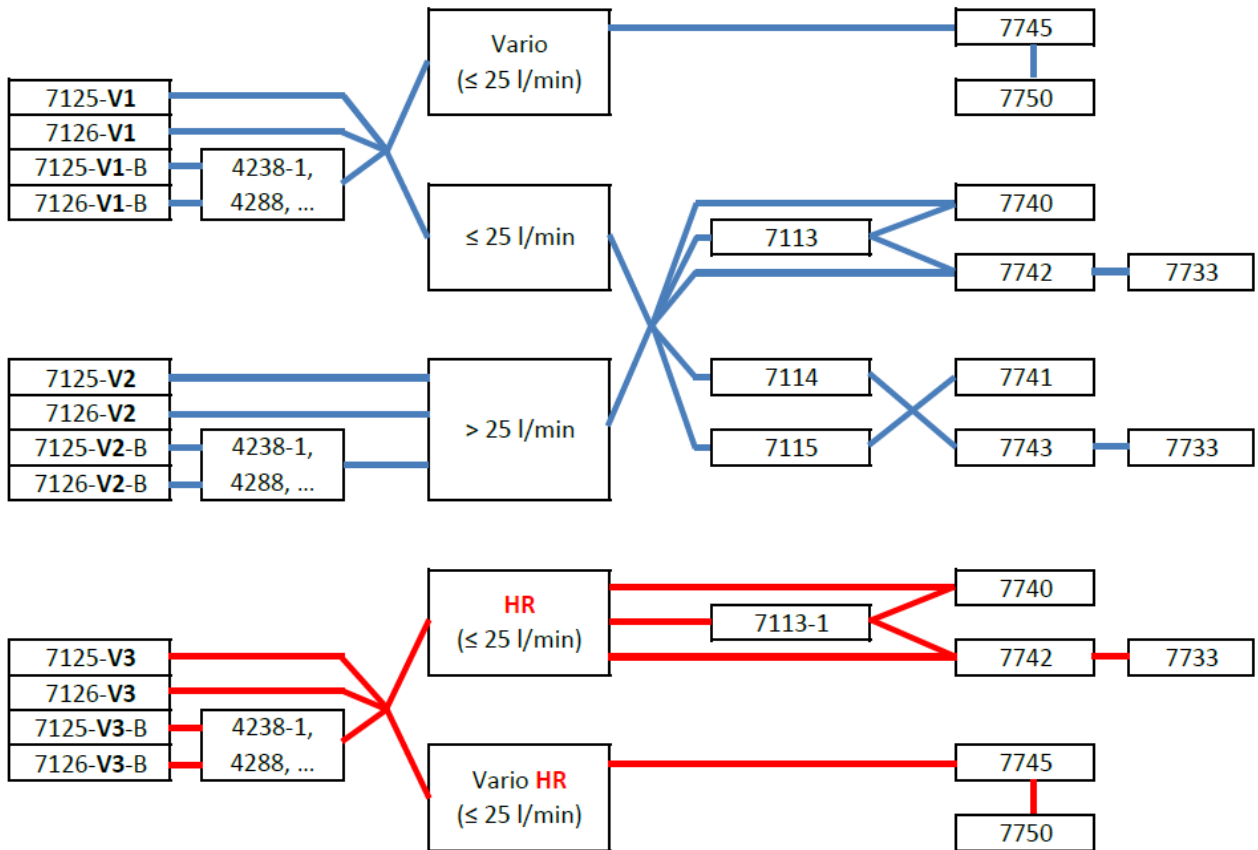
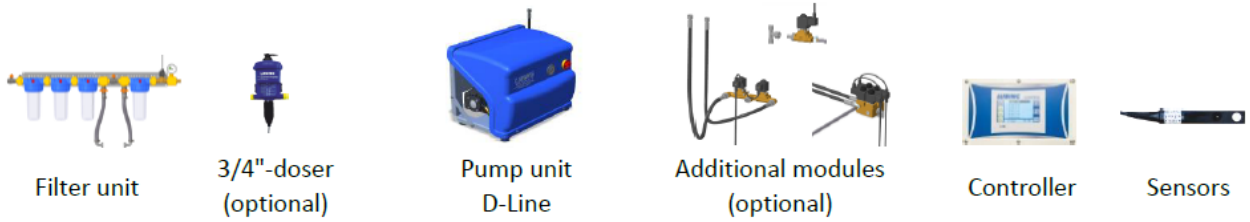
An additional part behind the main valve is a manometer. With this pressure gauge you are able to check the supply pressure very easy. In case of a defective main valve or plugged filters this simplifies the troubleshooting.

A further improvement is the optional bypass in the filter unit. This bypass enables an easy installation, maintenance and replacement of any desired 3/4"-medicator.

The same applies for repair work/replacement of the optional additional modules. It is simplified by a better accessibility to the modules. Furthermore an easy retrofitting of the additional modules is possible.

The valve connectors of the optional modules and of the main valve are connected on site to the LUBING Touch Controller. The connection has to be done as shown in the wiring diagrams.

The following overview shows all possible combinations of the D-Line pump units with filter units, additional modules and controllers:



optional wall mounting kit
for every D-Line pump unit:

